



**136 Montreal House, London, SE16 7AQ**

**Offers over £375,000**



A beautifully presented double-bedroom apartment in Montreal House, forming part of the highly sought-after Maple Quays development in Canada Water. Offering bright, thoughtfully designed living space, this impressive home is positioned within the landmark £4 billion Canada Water Regeneration Masterplan, placing it at the heart of one of London's most exciting and fast-evolving neighbourhoods.

Ideally located directly opposite Canada Water Station, the development provides immediate access to the Jubilee line and London Overground/Windrush line, ensuring fast and convenient connections across the capital. A wide selection of cafés, restaurants, green open spaces and scenic waterside walks are all close by, adding to the appeal of this vibrant riverside setting.

The apartment itself features a spacious open-plan reception and kitchen area, enhanced by floor-to-ceiling windows that flood the space with natural light and create a bright, welcoming atmosphere benefitting from direct access to the balcony. The double bedroom is generously sized and benefits from fitted wardrobes, while additional built-in storage further enhances the practicality of the layout. \*Photos staged.\*

Residents of Maple Quays enjoy access to an excellent range of amenities, including a 24-hour concierge, residents' gym, private landscaped gardens and secure cycle storage.

Leasehold: 108 years  
Ground rent amount: Approx £337.04pa  
Review period: Ask agent  
Service charge amount: Approx. £2,713.78pa  
Review period: Ask Agent  
Council tax band: D - Southwark

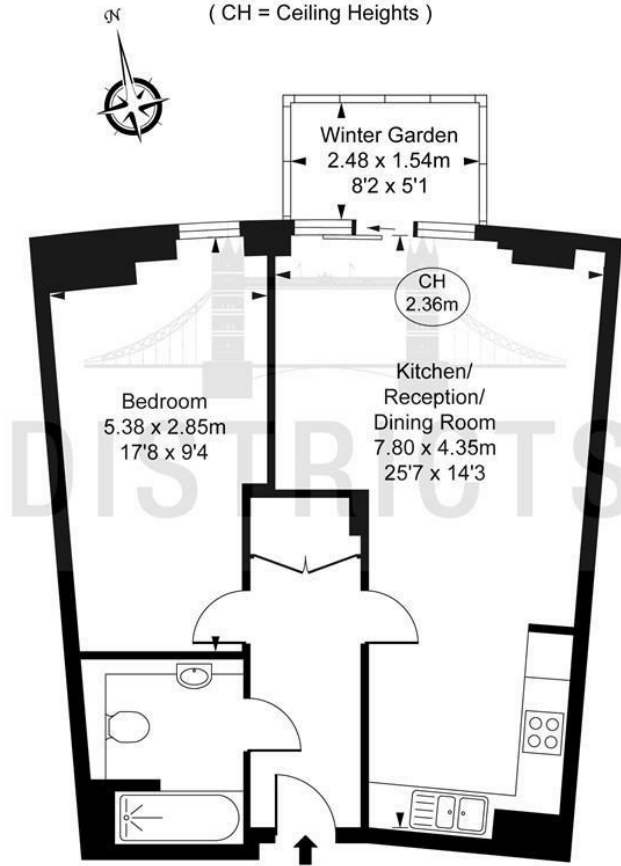
Electricity supply – Mains | Heating & Hot Water – Mains | Water Supply & Sewerage – Mains | Lift Access | Parking: No | Cladding: EWS1 Certificate Ask Agent.  
To check broadband and mobile phone coverage please visit Ofcom  
To check planning permission please visit Southwark





**Montreal House,  
Surrey Quays Road, SE16**  
Approximate Gross Internal Area  
52.11 sq m / 561 sq ft

( CH = Ceiling Heights )



This plan is not to scale. It is for guidance and not for valuation purposes.  
All measurements and areas are approximate only, and have been prepared in accordance with the current edition of the RICS Code of Measuring Practice.  
© Fulham Performance

Energy Efficiency Rating		Current	Potential
Very energy efficient - lower running costs			
(92 plus) <b>A</b>			
(81-91) <b>B</b>		<b>83</b>	<b>83</b>
(69-80) <b>C</b>			
(55-68) <b>D</b>			
(39-54) <b>E</b>			
(21-38) <b>F</b>			
(1-20) <b>G</b>			
Not energy efficient - higher running costs			
<b>England &amp; Wales</b>		EU Directive 2002/91/EC	

These particulars, whilst believed to be accurate are set out as a general outline only for guidance and do not constitute any part of an offer or contract. Intending purchasers should not rely on them as statements of representation of fact, but must satisfy themselves by inspection or otherwise as to their accuracy. No person in this firms employment has the authority to make or give any representation or warranty in respect of the property.